



Quick Specs



Personal User Applications

- Containers manufacture
- Machinery industry
- Shipbuilding and offshore engineering
- Automobile
- Metal shop
- Construction of rail vehicles

Process

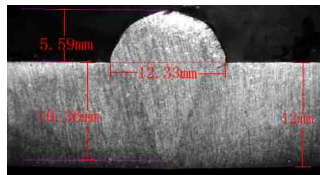
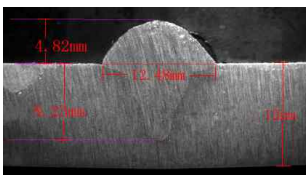
Process: CO₂ /GMAW /PULSED MIG / SMAW /GTAW /DOUBLE PULSED MIG

Output   

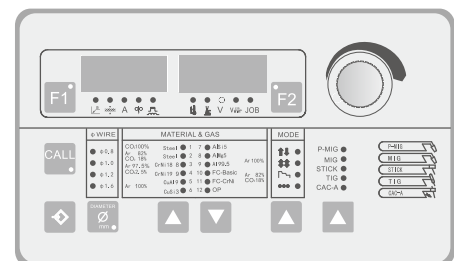
Input  

Features and benefits

- High penetration welding technology is embedded to realize complete welding penetration of medium and thick plate, which can provide an brilliant welding quality.
- Expert database of 1.4mm carbon steel welding added to the program, which can reduce the number of welding layers and improve production efficiency.
- High speed DSP full digital precise control technology is adapted to realize precise control and keep arc length stable in welding process.
- Full digital double closed-loops grating feedback wire feeding system is adapted to perform more precise and stable wire feeding.
- 4G and WIFI, digital display wire feeder, remote control welding torch, all can be equipped to the machine.
- **High penetration pulse gas shielded welding technology**
- It increases welding penetration by 30%, reduces spatter and can be used to replace gas shielded welding and traditional pulse welding.
- Traditional pulse MIG welding is limited in welding depth when the welding heat input should not be increased.
- It adapts precise waveform control technology to decrypt droplet transition principle of gas shielded welding, control welding form of arc, compress arc energy, and a concentrated high energy arc is generated between the welding torch and the workpiece, which can realize the breakthrough of high penetration pulse technology.



Traditional pulse MIG: 8.23mm High penetration MIG: 10.36mm



Standard equipments

- 1 Power source
- 1 Connected primary cable L=3m
- 1 Ground cable L=3m
- 1 Gas-cooled torch L=3m
- 1 Wire feeder with Europe connection

Technical Specification

	AMIG500PD	AMIG630PD
Rated input voltage/frequency (Hz)	3 phase, 380V±10%, 50 /60Hz	
Rated input capacity (KVA)	24	34
Rated input current (A)	38	51
Duty cycle (40°C)	100%@500A	100%@630A
OCV (V)	106	98
Adjustable current range (A)	60-500	60-630
Adjustable voltage range (V)	17-39	17-44
Trigger mode	2 /4T, Spot, Special 4T /Special 2T	
Wire size (mm)	1.0, 1.2, 1.4, 1.6	1.0, 1.2, 1.4, 1.6
Double pulse frequency (Hz)	0.5-5	
Job channels	100	
Protection class	IP23S	
Dimension (mm)	655*324*546	655*324*546
Weight (kg /lb)	55 /121	65 /143