

Aristo[®] Feed 3004

Advanced Synergic Multi-Process



Sturdy design with galvanized metal casing for use in tough environments. Electronically controlled feeding gives accurate and stable arc. The 4-roll feeder mechanism with grooves in both feed roll and pressure roll gives stable feeding and low wear on the wire, all to avoid operational disturbance.

The feeders are available with either 1.2 in. (30 mm) diameter rollers for wires .023-1/16 in. (0.6-1.6 mm) Steel, Stainless and .040 - 1/16 in. (1.0-1.6 mm) Aluminum.

Choose your level of control. Multiple panel options with U6, U82 and the new MA25 panel specialized for Steel and Aluminum applications.

- New drive motor offers more torque for improved arc starts, more consistent speed and less noise
- Redesigned drive rolls and feed mechanism for more positive feeding performance and reduced risk of wire shavings
- Short Circuit Termination (SCT) technology sharpens the wire at the end of each weld to promote better arc starts
- Feed 3004 can be equipped with a counter balance arm, lifting eye or a wheel kit for increased mobility
- TrueArcVoltage™ system measures the correct arc voltage at the contact tip (together with ESAB torches)

Industry

- General Industrial Fabrication
- Energy
- Windtowers
- Transportation
- Railcars
- Mining
- Mobile Machinery
- Steel Industry
- Ship/Barge Building
- Offshore Oil

Visit esab.com for more information.

Aristo[®] Feed 3004

Specifications	
Supply Voltage	42 VAC
Supply Frequency	50/60 Hz
Wire Feed Speed Range	32 – 1000 in. (0.8 – 25.0 m/min)
Wire Spool Capacity	44 lbs. (18 kg)
Max Spool Diameter	12 in. (300 (440**) mm)
Dimensions , L x W x H	27.1 x 10.8 X 16.1 in. (690 x 275 x 420 mm)
Weight	33 lbs. (15 kg)
Approvals	CE
Wire Diameter Range:	
Mild Steel	.023-1.16 in (0.6 – 1.6 mm)
Stainless Steel	.023-1.16 in (0.6 – 1.6 mm)
Aluminum	.040-1/16 in. (1.0– 1.6 mm)
Cored	.035-1/16 in. (0.9 – 1.6 mm)

** For P/N 0459233880

Panel Functions			
	MA25 Pulse Steel/Aluminum	Aristo U6	Aristo U82 Plus
Qset™, sMIG	•	•	•
Amperage Target Setting	•	•	•
2/4 Stroke	•	•	•
Creep Start	•	•	•
Hot Start	•	•	•
Crater Filling	•	•	•
Adjustable Burnback Time	•	•	•
Gas Pre/Post Flow	•	•	•
Digital V/A Meter	•	•	•
Gas Purge/Wire Inching		•	•
Memory Set	3	10	255
Create Own Synergic Lines	ESAT*	ESAT*	USB
Pre-programmed Synergic Lines	54/30	60	>230
Synergic Pulse	•	•	•
SuperPulse™			•
Stick (SMAW)	•	•	•
Limit Editor (set and measured values)			•
Production Statistics			•
Auto Save Mode			•

* ESAB Service Tool

Aristo[®] Feed 3004

Ordering Information	
Aristo Feed 3004 (MA25 Steel)	0460526682
Aristo Feed 3004 (MA25 Aluminium)	0460526680
Aristo Feed 3004, U82 Plus Encl. 10 pole, air-cooled (Requires P/N 0460820881)	0460526481
Aristo Feed 3004, U6 Encl. 10 pole, air-cooled	0460526486
Aristo Feed 3004w (MA25 Steel)	0460526683
Aristo Feed 3004w (MA25 Aluminium)	0460526681
Aristo Feed 3004w, U82 Plus Encl. 10 pole, water-cooled (Requires P/N 0460820881)	0460526891
Aristo Feed 3004w, U6 Encl. 10 pole, water-cooled	0460526896
Aristo U82 Plus, complete incl. holder	0460820881

Options & Accessories	
Control cable extension, 7.5 m (25 ft)	0460877891
Wheel Kit, front wheels turn	0458707880
Strain relief for welding gun	0457341881
Strain relief for connection cables	0459234880
Lifting eye	0458706880
Adapter for spool diameter 17 in. (440 mm)	0459233880
Coil adapter	34323
Adapter for 11 lbs. (5 kg) spool	0455410001
Guide Pin (If no trolley)	0458731880
Turning piece for Aristo Feed/Origo Feed MPac versions	0458703880
Quick connector for Marathon Pac	899F50
Inlet guide for Marathon Pac (use with 899F50)	0558002354
MiniBoom counterbalance device (requires P/N's 0460565880, 0461310880 and 0460946880)	0458705880
Trolley 4-wheel stabilizer kit for counterbalance device	0460946880
Spool cover, steel	0459431880
Remote control MTA1 CAN	0459491880
Remote control MT1 10Prog CAN	0459491882
Remote Connection Cable 16.4 ft. (5 m), 12p, U82 Feeders	0459554880
Remote Connection Cable 16.4 ft. (5 m), 10p, U6 Feeders	0459960880
Push-Pull Connection kit with W.F.S.	0459681881
Push-pull gun connection kit, basic	0459020883
Remote adapter kit for Miggytrac/Railtrac	0459681880

Aristo[®] Feed 3004

Interconnection Cables	Air-Cooled	Water-Cooled
Connection Set CAN 10p, 5.6 ft. (1.7 m)	0349312450	0459528790
Connection Set CAN 10p, 16.4 ft. (5 m)	0349312451	0459528791
Connection Set CAN 10p, 32.8 ft. (10 m)	0349312452	0459528792
Connection Set CAN 10p, 49.2 ft. (15 m)	0349312453	0459528793
Connection Set CAN 10p, 82 ft. (25 m)	0349312454	0459528794
Connection Set CAN 10p, 114.8 ft. (35 m)	0349312455	0459528795

Interconnection Cables Aristo 5000i only	Air-Cooled	Water-Cooled
Connection Set CAN 12-10p, 5.6ft. (1.7m)	0459528960	0459528970
Connection Set CAN 12-10p, 16.4ft. (5m)	0459528961	0459528971
Connection Set CAN 12-10p, 32.8ft. (10m)	0459528962	0459528972
Connection Set CAN 12-10p, 49.2ft. (15m)	-	0459528973
Connection Set CAN 12-10p, 82ft. (25m)	-	0459528974
Connection Set CAN 12-10p, 114.8ft. (35m)	-	0459528975

Compatible Power Supplies	
Aristo Mig 4004i Pulse, 460V	0465152882
Aristo Mig 4004i Pulse, 460V w/WeldCloud Top Box	0445301881
Aristo Mig 5000i (3 x 460V 60Hz)	0459230884
Aristo Mig 5000iR 460V with WeldCloud	0445400884
Aristo Mig U5000iw (3 x 460V 60Hz)	0459230886
Aristo Mig 5000iwR 460V with WeldCloud	0445400885

Aristo Mig/Pulse Process Selection Guide								
Best for:	Spray Arc	Swift Arc Transfer (SAT)	Pulse Spray Arc	Pulse	Pulse on Pulse U82 Plus	Pulse on Short Arc	Qset sMIG	Short Arc
Deposition	1	1	1	1	2	3	3	3
Travel Speed	1	1	1	1	2	3	3	3
Thick Metals	1	1	1	1	2	3	3	3
Thin Metals	4	3	4	3	2	1	1	1
Low Heat Input	4	3	3	3	2	2	1	1
Gap Filling	4	4	4	3	2	2	1	1
Flat & Horizontal	1	1	1	1	2	3	3	3
Out of Position	4	4	4	3	2	2	1	1
Spatter	1	1	1	1	1	1	2	2

HOT
COLD

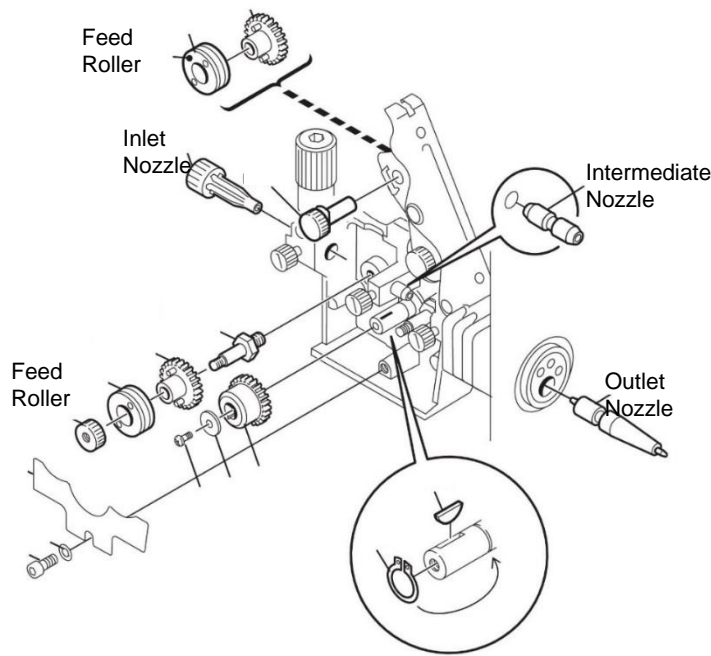
Ratings 1 = Best 2 = Good 3 = Acceptable 4 = Not Recommended
SAT is a high productivity process with lower heat input and excellent bead profile and penetration.
Pulse Spray Arc is a process that reduces the heat input of spray arc while achieving spray arc travel speeds.
Pulse on Pulse is a process where you achieve lower heat, low spatter and TIG-like bead appearance.
Pulse Short Arc is a process with low heat input, low spatter and is used on thin material.
QSet is a short arc process where the arc is digitally controlled for superior accuracy and performance.

Aristo[®] Feed 3004

Wear and Spare Parts	
Feed Roller V Grv for Fe/SS .023-.030 in. (0.6-0.8 mm)	0459052001
Feed Roller V Grv for Fe/SS .030-.035 in. (0.8-0.9 mm)	0459052002
Feed Roller V Grv for Fe/SS .035-.045 in. (0.9-1.0 mm)	0459052003*
Feed Roller V Grv for Fe/SS .052-.062 in. (1.4-1.6 mm)	0459052013
Feed Roller V-K Grv for C .035-.045 in. (0.9-1.2 mm)	0558002352
Feed Roller V-K Grv for C .045-.052 in. (1.2-1.4mm)	37319
Feed Roller V-K Grv for C .062-.078 in. (1.6-2.0 mm)	0458825003
Feed Roller U Grv for Al .030-.040 in. (0.8-1.0 mm)	0458824001
Feed Roller U Grv for Al .035-.3/64 in. (.9-1.2 mm)	36860
Feed Roller U Grv for Al 3/64-1/16 in. (1.2-1.6 mm)	36861
Inlet Nozzle Ø 2mm for Fe/SS/AIC .023-.062 in. (0.6-1.6mm)	0156602001
Inlet Nozzle Ø 3mm for Fe/SS/AIC .023-.062 in. (0.6-1.6mm)	0455049001
Intermediate Nozzle for Fe/SS/C .023-.062 in. (0.6-1.6mm)	0455072002
Intermediate Nozzle for Al .030-1/16 in. (0.8-1.6 mm)	0456615001
Outlet Nozzle for Fe/SS/C .023-.062 in. (0.6-1.6 mm)	0469837880
Outlet Nozzle for Fe/SS/C .078 in. (2.0 mm)	0469837880
Cabinet inlet nozzle for Cored wire (HD)- Recommended	0332318001
Outlet Nozzle for Al .030-1/16" (0.8-1.6 mm)	0469837881

Fe = Mild steel; SS = Stainless Steel, Al = Aluminum, C = Cored Wire
 For complete list of wear and spare parts please see the manual.

*As Delivered



ESAB / esab.com

