

Origo Vac Cart W3

Plug and play mobile weld fume extraction unit



Origo Vac Cart W3 is a mobile fume extraction unit used to help maintaining a healthy work environment with clean, fume-free air by extracting fumes directly at the source in light and medium welding applications.

These mobile units are user-friendly and come complete with 3 m (10 ft) fume extraction arms. The integrated light further optimizes the design for ease of use. The fume extraction arm is 160 mm (6.3 in.) diameter, and the cart features an extra-large filter which provides higher dust holding capacity due to better filter utilization and longer filter life.

Origo Vac Cart W3 offers enhanced mobility and safety with large back wheels and lockable front swivel wheels and a 6 m (20 ft) power cable.

Welding Process

- Welding, GMAW (MIG/MAG)
- Welding, GTAW (TIG)
- Welding, PAW -Plasma Arc Welding
- Welding, SMAW/MMA (Stick)

- Extra-large filter 30m² (323 ft²) for extended filter life, up to a year
- Lightweight and highly mobile
- True airflow measurement within the hood when the 3 m (10 ft) arm is positioned at a 45-degree angle
- Quick and easy filter replacement, taking just minutes
- Simple operation: plug in (1 ph), turn on, and you are ready to go
- Efficiency >99% in capturing welding fumes
- LED display indicates filter status, including alarm when the filter needs replacement
- ISO 21904 compatible for industry standards compliance
- Suitable for fume extraction for light to medium welding applications
- Optional HEPA filter (not included)



Replacement filter



Improved user notifications panel

Visit **esab.com** for more information.

Origo Vac Cart W3

Specifications	
Primary Voltage	110/230 VAC \pm 15% , 1ph, 50/60 Hz
Power	0.75 kW
Filter Surface	30 m ² (323 ft ²)
Noise Level (at 1m/3ft, 100% motor power, ISO 11201)	79 dB(A)
Operating Temperature	0 to +35 °C (+32 to +95 °F)
Max Airflow Temperature	+60 °C (140 °F)
Extraction Capacity	675–1050 m ³ /h (397–620 cfm)
Filter Efficiency (main)	>99 %
Filter Efficiency (HEPA accessory)	> 99.95 % H13
Standards (Filter)	(ISO 21904-2) F9 (EN779) MERV 14 (ASHRAE 52.2)
Standards (Unit)	EN ISO 21904-1:2020, EN ISO 12100:2010, EN ISO 20607:2019 EN 61000-6-2:2019, EN 61000-6-4:2019 EN 61000-3-3:2013, EN 60204-1:2018
Hose Diameter	160 mm (6.3 in.)
Dimensions L x W x H (with hose min extended)	1875 x 770 x 2050 mm (74 x 30 x 81 in.)
Dimensions L x W x H (without hose)	1145 x 770 x 1410 mm (45 x 30 x 55.5 in.)
Weight	73 kg (160 lbs)

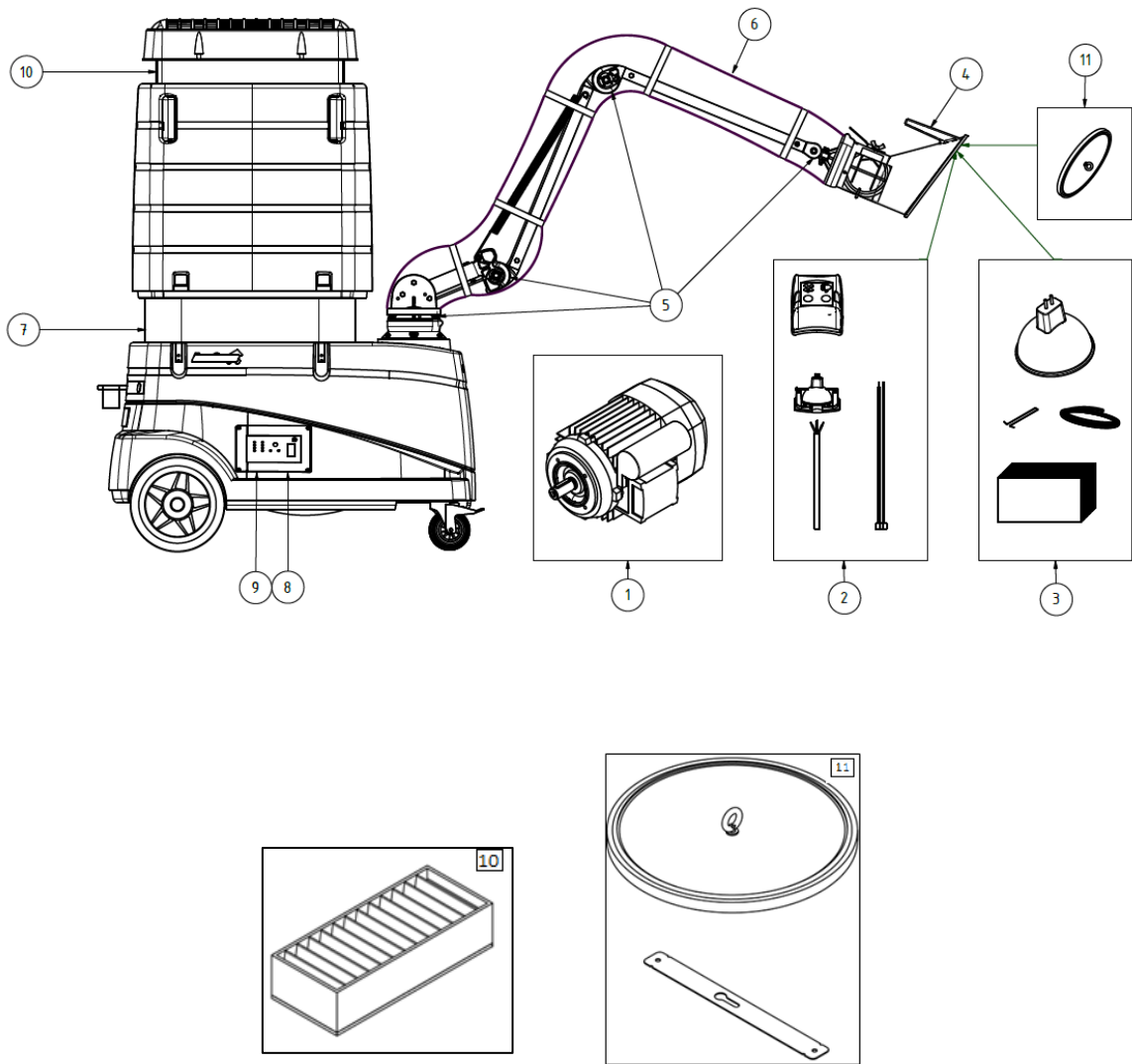
Ordering Information	
Description	Part Number
Origo Vac Cart W3, 230V, 50Hz, 3 m (10 ft), with light, EU	0700003895
Origo Vac Cart W3, 230V, 50Hz, 3 m (10 ft), UK	0700003898
Origo Vac Cart W3, 110V, 50Hz, 3 m (10 ft), UK	0700003899
Origo Vac Cart W3, 110V, 60Hz, 3 m (10 ft), with light, US	0700003901

Delivery includes: Fume extraction unit complete with hose arm and hood, main filter and instruction manual.

Wears & Spares		
No	Description	Part Number
1	Motor 0.75kW 115/230V 1ph 50/60Hz	0700003081
2	LED light/fan switch Origo Vac Arm	0700003212
3	10 x lens, 1 x LED	0700003072
4	Hood for Origo Vac Arm	0700003075
5	Wear kit original	0700003076
6	Hose Øm 160 3m complete	0700003062
7	Filter Nanofiber Origo Vac Cart	0464663050
8	Overload protection w enclosure 8A T12	0700003920
	Overload protection w enclosure 16A T12	0700003921
9	Control Panel FC W3 w circ.board	0700003902

Origo Vac Cart W3

Options & Accessories		
No	Description	Part Number
10	HEPA filter H13 Origo Vac Cart	0700003219
11	Spark filter for Origo Vac Arm hood	0700003217



ESAB / [esab.com](https://www.esab.com)

