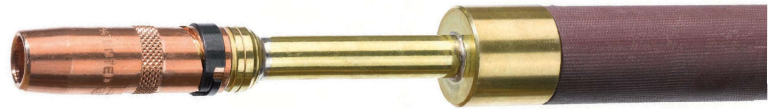


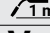


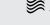


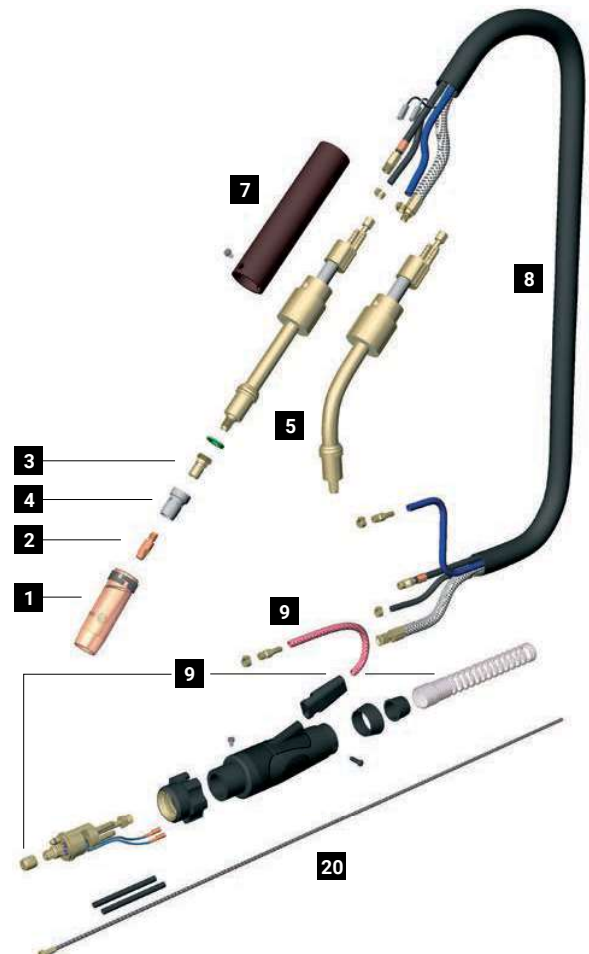
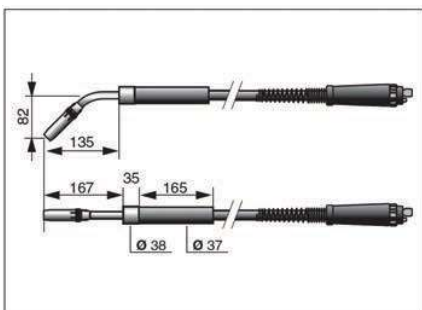
AUTOPLUS 500

CE EN60974-7



| CODE | ↔ | | 📐 | 🔌 |
|--------|--------|--------|-----|---|
| | Length | Height | | |
| MB0560 | 1,5 m | 5' | 0° |  EURO |
| MB0561 | 1,5 m | 5' | 50° | |
| MB0562 | 3 m | 10' | 50° | |
| MB0565 | 3 m | 10' | 0° | |

| TECHNICAL DATA | | |
|--|---------------------|---------------|
|  | AUTOPLUS 500 | |
|  | 1,1 kg | 2.43 lb |
| V PEAK | 113 | |
|  | 1,0 ÷ 2,4 mm | .040" ÷ 3/32" |
| X 100% | 500A CO2 - 450A Mix | |
|  | 2÷4 bar | |
|  | 1,6 l/min | |



| | CODE | | | Ø | | ↔ | REF | | |
|----|-----------|--|--|--------------|---------------|-------|---------|----------|----|
| 1 | MC0268 | | nozzle - 2,5 mm thickness | 16 mm | 5/8" | 76 mm | 3" | 145.0085 | 10 |
| 1 | MC0276 | | nozzle - 2 mm thickness | 16 mm | 5/8" | 76 mm | 3" | 145.0085 | 10 |
| 1 | MC0290 | | nozzle - 2,5 mm thickness | 14 mm | 9/16" | 76 mm | 3" | 145.0132 | 10 |
| 1 | MC0291 | | nozzle - 2,5 mm thickness | 20 mm | 25/32" | 76 mm | 3" | 145.0051 | 10 |
| 1 | MC0292 | | nozzle - 2,5 mm thickness | 15 mm | 19/32" | 76 mm | 3" | - | 10 |
| 1 | MC0293 | | nozzle - 2,5 mm thickness | 20 mm | 25/32" | 82 mm | 3-7/32" | 145.0179 | 10 |
| 1 | MC0340 | | heavy duty nozzle - 3 mm thickness | 16 mm | 5/8" | 76 mm | 3" | | 10 |
| 1 | MC0568 | | quick release nozzle - 2,5 mm thickness | 16 mm | 5/8" | 76 mm | 3" | - | 10 |
| 1 | MC0576 | | quick release light nozzle - 2 mm thickness | 16 mm | 5/8" | 76 mm | 3" | - | 10 |
| 2 | MD0005-80 | | M8 - CuCrZr | 1,0 mm | .040" | 30 mm | 1"-3/16 | 140.0316 | 20 |
| 2 | MD0005-82 | | M8 - CuCrZr | 1,2 mm | .045" | 30 mm | 1"-3/16 | 140.0445 | 20 |
| 2 | MD0005-84 | | M8 - CuCrZr | 1,4 mm | .052" | 30 mm | 1"-3/16 | 140.0536 | 20 |
| 2 | MD0005-86 | | M8 - CuCrZr | 1,6 mm | 1/16" | 30 mm | 1"-3/16 | 140.0590 | 20 |
| 2 | MD0005-90 | | M8 - CuCrZr | 2,0 mm | 5/64" | 30 mm | 1"-3/16 | 140.0656 | 20 |
| 3 | ME0076 | | M8 - brass | | | 25 mm | 31/32" | - | 10 |
| 3 | ME0081 | | M6 - brass | | | 25 mm | 31/32" | - | 10 |
| 3 | ME0083 | | M8 - brass | | | 29 mm | 1"-5/32 | - | 10 |
| 3 | ME0390 | | M8 - copper | | | 25 mm | 31/32" | - | 10 |
| 4 | ME0074 | | plastic | | | 28 mm | 1"-3/32 | - | 10 |
| 4 | ME0079 | | plastic | | | 29 mm | 1"-5/32 | 300029 | 10 |
| 4 | ME0479 | | high-tech plastic | | | 28 mm | 1"-3/32 | - | 10 |
| 4 | ME0579 | | ceramic | 16 mm | 5/8" | 28 mm | 1"-3/32 | - | 10 |
| 20 | GM0530 | | uncoated steel liner | 1,2 ÷ 1,6 mm | .045" ÷ 1/16" | 3 m | 10' | | 1 |

| | CODE | | | |
|---|--------|--|-------------------------------|----|
| 5 | FB1278 | | insulator | 10 |
| 5 | MG0061 | | Autoplus 500 torch head - 50° | 1 |
| 5 | MG0062 | | Autoplus 500 torch head - 0° | 1 |
| 7 | MP0125 | | handle | 1 |
| 8 | MN1005 | | cable assembly - 1,5 m / 5' | 1 |

| | CODE | | | |
|---|--------|--|----------------------------|----|
| 8 | MN1015 | | cable assembly - 3 m / 10' | 1 |
| 9 | AR0052 | | EURO connector | 1 |
| 9 | BW0020 | | metal EURO nut | 10 |
| 9 | FA0026 | | liner nut M10x1 | 10 |
| 9 | MT0101 | | Back box kit | 1 |

| | CODE | ↔ |
|----|--------|-----------|
| 8b | QB0072 | 3 m / 10' |
| 8c | QB0080 | 3 m / 10' |
| 8d | QB0076 | 3 m / 10' |
| 8e | QA0019 | 3 m / 10' |
| 8f | MQ0205 | 3 m / 10' |