

SHENZHEN JASIC TECHNOLOGY CO., LTD.

Address: No. 3, Qinglan 1st Road, Pingshan District, Shenzhen, Guangdong, China

Postcode: 518118

Tel: +86 (0755) 8670 6250

Fax: +86 (0755) 2736 4108

Website: www.jasitech.com

E-mail: sales@jasitech.com

 @JASICTechOfficial

 JASIC Technology Co., Ltd.

 @jasitech_official

The information in this document may contain statements or predictive statements including, without limitation, statements regarding product specifications, current/future financial and operating results, future product portfolios, new technologies, etc. There are a number of factors that could cause actual results and developments to differ materially from those expressed or implied in these statements. Therefore, such information is provided for reference purpose only and constitutes neither an offer nor an acceptance. JASIC may change the information at any time without notice.



<https://www.jasitech.com/>

Copyright©2024 Shenzhen JASIC Technology Co., Ltd.



EVOLVE



Powered by



On Demand Processes & Functions



Modular Hardware Platform

JTECloud App:



Advance
ARM Cortex
Microprocessors



Silicone
Carbide
IGBT



Inverter
Frequency
Modulation



Fully
Synergic



Full Digital
PFC



Glick
Function



100 Job
Memory Slots



Digital
Control 4 Roll
Wire Feeder



OTA
Firmware
Updates



EVOLVE
Digital Smart
Torches (Optional)

Why EVOLVE?

Today's welding challenges are complex and constantly changing, and welding machines that can update their processes and functions on demand are JASIC's responses to those challenges. This game-changing product range combines the power of advance digital control, modular hardware architecture, and cloud service; it is capable of constantly "EVOLVEing" to be ready for **Any Weld, Anytime, Anywhere.**



Any weld

Master every welding task with precision and consistency, no matter the process, material, or WPS.



Multi-process, On-demand

Whether it's MIG, TIG, MMA, or CUT, EVOLVE provide the flexibility, control, and performance needed to meet diverse welding requirements in any industrial setting. This versatility makes EVOLVE an invaluable tool for fabricators who need to switch between processes frequently while maintaining consistent, high-quality results.



Material Versatility

From common metals to more specialized alloys, EVOLVE machines are engineered to handle a broad spectrum of materials. Across all types of projects, the technologies of EVOLVE ensure that each material is welded with the precision and care it requires.



Advanced Synergic Controls

Versatile across welding processes, EVOLVE's advanced synergic control ensures ease of use, precise control and high-quality welds across a wide range of specifications and materials.



Digital Control Powered by Most Advanced Processor Technology

EVOLVE's ARM Cortex-M4 is the optimal DSP microprocessor with floating-point unit (FPU). Its top-notch digital signals processing capabilities make it ideal for precise waveform control. It also supports advanced welding algorithm which elevates overall welding results. Furthermore, ARM Cortex-A7 is equipped* to bolster EVOLVE's data processing and IoT capabilities for industrial applications.

*: not applicable to the single phase EVOLVE200+



Next-Gen Inverter

EVOLVE's silicon carbide (SiC) inverter delivers superior power efficiency, precise arc control, and enhanced stability across diverse welding processes. Its high-speed switching and reduced power losses enable consistent, high-quality welds on a wide range of materials.





Seamless Human-machine Interface

EVOLVE's human machine interface (HMI) delivers a truly seamless user experience through its full digital control system. Beyond the intuitive color touchscreen, users also benefit from EVOLVE's digital smart torches and the JTECloud app.



● EVOLVE Smart Torches



EVOLVE smart torches elevate the user experience by offering welders fingertip control over job parameters with real-time adjustments, even during ongoing welds. Their OLED graphic displays not only showcase the setting parameters but also provides real-time feedback on the welding process, ensuring welders have immediate insights into their work.

● JTECloud App



This mobile app gives users control over all EVOLVE's welding parameter settings right at their fingertips, wirelessly. Users can choose to connect to their machines via Bluetooth or Wifi.



Spool Gun ●

Push-Pull ●

TIG Torch ●

MIG Torch ●

Analog Canopy ●

Smart Canopy ●

Blind Canopy ●

Flexible Torch Interfaces

Users can quickly switch between different interfaces on their EVOLVE smart torches. The interfaces' plug and play design saves users the hassle of any further calibration, just set it up and ready to go.

Any time

Stay ahead with future-proof technology, continuous updates, and modular upgrades - ready for today and tomorrow.



Modular Design

Expand the machine's functionality with additional hardware modules, allowing for upgrades and new processes as your needs evolve. Modular hardware platform is the basis for continuous evolution of EVOLVE's hardware - for now and in the future.

• Plug & Play Modules

EVOLVE's additional hardware modules can be quickly integrated into the existing setup without the need for further reconfiguration or calibration. Simply connect the desired module, and the machine is ready to use with the new functions.



Wire Feeder Module



Equipped with digital 4-roll wire feeder and a color touch screen interface, this module enhances wire feeding flexibility for various welding setups and wire types.



DC Module



This module supports Tungsten Inert Gas (TIG) welding using direct current (DC), making it suitable for welding materials like stainless steel and mild steel.



AC/DC Module



With TIG AC/DC capabilities, this module enables welding with both alternating current (AC) and direct current (DC), allowing for precise control, especially when working with aluminum and other materials.



Water Cooler Module



The cooling unit ensures optimal operating temperatures for your welding torches, guarding against overheating and promoting consistent performance.



CUT Module (Coming Soon)



Two versions will be available: the 50A version comes with built-in compressor, and is ideal for light-duty applications. The 120A version is to be paired with EVOLVE400 or above for heavy-duty applications.



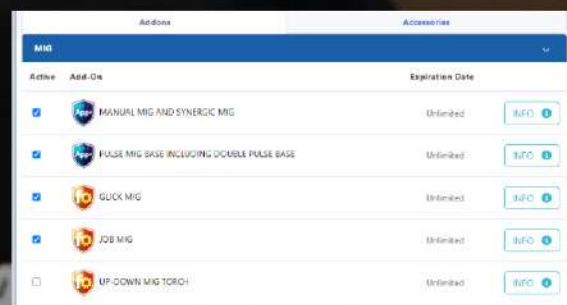
JTECloud Service

The JTECloud reaffirms EVOLVE's aptitude to face modern day welding challenges, giving users comprehensive control over tasks ranging from the customization of individual machine to the operation management of industrial welding workshop.

On-Demand Processes & Functions



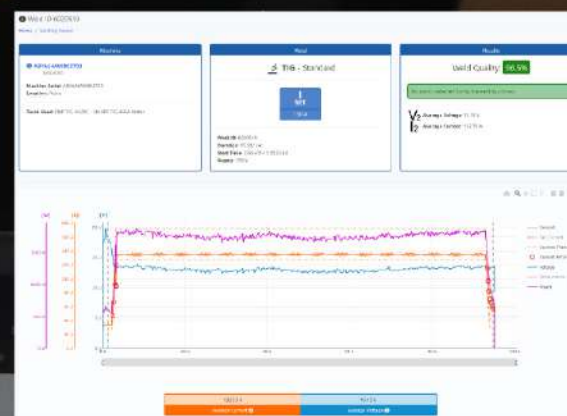
Tailor your machine's welding process/function setup on the cloud. Explore new processes and functions available for download directly to your machines.



Welding Data Management



Harness the full potential of welding data tracking and analytics through JTECloud, effectively optimizing workshop productivity and curtailing operation costs.



Fleet Management

Effortlessly oversee an entire fleet of cloud-connected welding machines. Monitor performance, deploy updates, and ensure standardized operations with ease.

Machine Model ID	Machine Firmware	User-defined Firmware	Registration Date TT	Location
EVOLVE 130	1.1.5.75	1.2.6.0	August 31, 2024, 9:21 AM	None
EVOLVE 130	1.1.5.75	1.2.6.0	August 31, 2024, 9:19 AM	None
EVOLVE 130 FUS	1.2.5.2.0	1.2.6.0	Aug 17, 2024, 8:08 AM	None
EVOLVE 130	1.1.5.75	1.2.6.0	Aug 15, 2024, 1:55 PM	None
EVOLVE 130 FUS	1.2.5.2.0	1.2.6.0	Aug 13, 2024, 1:52 AM	None
EVOLVE 130 FUS	1.2.5.2.0	1.2.6.0	Aug 12, 2024, 2:47 AM	None
EVOLVE 130	1.1.5.75	1.2.5.0	Aug 12, 2024, 1:47 AM	None
EVOLVE 130	1.1.5.77	1.2.5.0	Aug 12, 2024, 1:45 AM	None
EVOLVE 130	1.1.5.72	1.2.5.0	Aug 12, 2024, 1:45 AM	None
EVOLVE 130	1.1.5.43	1.2.5.0	Aug 11, 2024, 1:02 AM	None
EVOLVE 130 FUS	1.2.5.2.0	1.2.5.0	Aug 11, 2024, 1:53 AM	None
EVOLVE 130 FUS	1.2.5.2.0	1.2.5.0	August 1, 2022, 12:00 AM	None
EVOLVE 130 FUS	1.2.5.2.0	1.2.5.0	September 1, 2022, 12:00 AM	None



OTA Firmware Update

Keep your EVOLVE machines current with JTECloud's firmware update management. Connected machines automatically receive update notifications for the latest versions.



Anywhere

From workshops to rugged sites, EVOLVE performs seamlessly in any environment, supported by global JTECloud service.





Wireless Data Connectivity

EVOLVE's ability to connect via WiFi or GSM ensures reliable access to JTECloud, whether in workshops or remote locations. This flexibility enables real-time updates and monitoring, making EVOLVE adaptable for welding operations anywhere.



GPS

EVOLVE's GPS ensures precise tracking and management of machines across diverse job sites, from workshops to remote locations. It simplifies fleet management, improves resource allocation, and enhances security by monitoring machine locations in real time. This makes EVOLVE reliable and adaptable for use "anywhere" in the world.



Input Power Adaptability

EVOLVE power sources' input power adaptability allow them to seamlessly switch between single-phase and three-phase power*, and operate across a wide voltage range. This flexibility ensures reliable performance in diverse environments, from workshops with stable power supplies to rugged sites with varying electrical conditions.

*: only applicable to EVOLVE300 & 400



Robotics Ready

EVOLVE's CAN Bus robotic interface allows seamless integration into automated welding systems, making it adaptable for diverse environments - from workshops to fully automated production lines. This flexibility ensures EVOLVE can perform consistently in manual or automated settings.

Weld Seam Showcase

Material: Aluminum

Process: MIG | Current: 67A | Voltage: 18.2V | Thickness: 2mm



Material: Aluminum

Process: Double Pulse MIG | Current: 178A | Voltage: 23.9V | Thickness: 6mm | Pulse Frequency: 1.8Hz



Material: Stainless Steel

Process: Double Pulse MIG | Current: 175A | Voltage: 22.2V | Thickness: 5mm | Pulse Frequency: 1.8Hz



Material: Stainless Steel

Process: Double Pulse MIG | Current: 267A | Voltage: 27.8V | Thickness: 10mm | Pulse Frequency: 1.5Hz



Recommended Versions

At present, whether you choose the EVOLVE300, 400, or 500 as your power source, we recommend 2 package versions as follows:

Version 1

Version 2



Specifications

Power Sources

Model		EVOLVE500(N3D1)	EVOLVE400(N3D2)	EVOLVE300(N2D4)
Input power source		380V-400V-415V-440V 3PH 50/60Hz	195VAC~460VAC±10% 1PH/3PH 50/60Hz	
Power factor		0.85	0.99	0.99
No load voltage		79(VRD 9V)	70(VRD 9V)	70(VRD 9V)
Duty cycle		60%	40%	40%
Welding	MMA	20A~500A	20A~225A(1PH) 20A~400A(3PH)	20A~225A(1PH) 20A~300A(3PH)
	MIG	20A/15V~500A/39V	20A/15V~225A/25.2V(1PH) 20A/15V~400A/34V(3PH)	20A/15V~225A/25.2V(1PH) 20A/15V~300A/29V(3PH)
Protection class		IP23	IP23S	IP23S
Insulation class		H		
Cooling method		Air Cooling		
Power source dimension		842*302*395mm		

AC/DC Module

Model	AC/DC Module EK-01(P1D03)
Duty cycle	40%
Welding current	DC: 5A-500A
	ACDC: 15A-500A
Protection class	IP23S
Insulation class	H
Cooling method	Air Cooling
Power source dimension	842*302*190 mm

DC Module

Model	DC Module EK-02(P1D04)
Duty cycle	40%
Welding current	5A-500A
Protection class	IP23S
Insulation class	H
Cooling method	Air Cooling
Power source dimension	842*302*190 mm

Wire Feeder

Model	EVOLVE W-FEED
Motor power	100W 24VDC
Power supply	24V
Max current	500A 60% ED
Water cooler	Available
Push pull	Available
Wire coil	300 mm
Diameter of wire	0.8-1.6
User interface	Color display 5"
Motor power	100W
Protection class	IP23S

CUT Module

CUT Module	EVOLVE300	EVOLVE400	EVOLVE500
Plasma output range	20-50A	20-100A	20-120A
Duty Imax	60% 50A	60% 100A	60% 120A
Duty 100%	38A	77A	92A
Power supply	24V DC	24V DC	24V DC
Cooling	Air	Air	Air

Water Cooler Module

Model	EVOLVE W-Cool
Water cooler capacity	6L
Pump power	160W 24VDC
Water flow	2L/min
Motor power	100W 24V DC